

Control Sclerotinia over flowering and reduce crop loss



4436



Are you losing fruit to Sclerotinia?

ACVM-registered BioStart TripleX® controls Sclerotinia in kiwifruit.

Sclerotinia is a fungus that infects the flowers of kiwifruit resulting in either the fruit aborting soon after forming or scarring the fruit, leading to rejection at the pack house. Once Sclerotinia becomes established in an orchard infection can re-occur in subsequent seasons.

The active ingredient in TripleX, the microbe *Bacillus amyloliquefaciens* Bs1b, reduces Sclerotinia's ability to establish and develop by colonising the flowers and outcompeting the fungus.

TripleX is certified organic and is on the Zespri Crop Protection Standard.

For best results:

Apply TripleX at 80-90% flowering adding a sticker/spreader to ensure good coverage.

Spray early morning, early evening or in overcast conditions.

TripleX can be applied with many cover and nutritional sprays. For a compatibility list call 0800 116 229

biostart®

Available from leading horticultural and rural suppliers
Call 0800 116 229 or visit biostart.co.nz

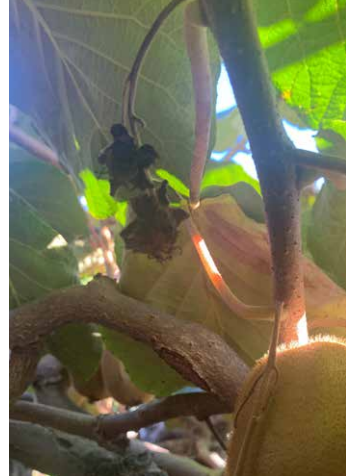
TripleX reduces Sclerotinia incidence in kiwifruit orchards

Bay of Plenty Hayward Orchards Trial

Independent trials were conducted over 3 seasons (2018/19, 2019/20 and 2021/22) in six Bay of Plenty Hayward Orchards

TripleX was applied once at 1.5 L/ha (150 mL/100L) at 80-90 % flowering

TripleX reduced the incidence of Sclerotinia by 45% through lowering the numbers of aborted fruit and reducing the amount of scarred fruit.

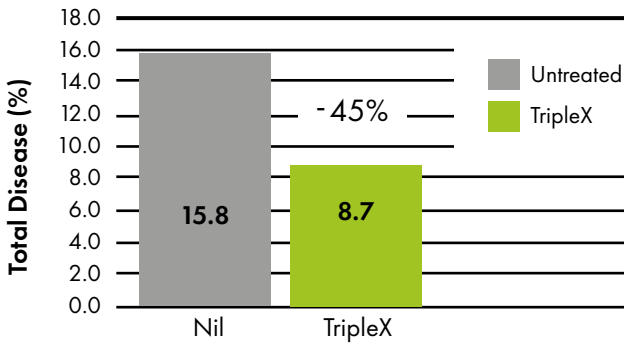


Example of aborted fruit resulting from Sclerotinia



Example of fruit scarred by Sclerotinia

Effect of TripleX on Sclerotinia Incidence



	Nil (unsprayed)	Triplex®
Total Disease (%)	15.8	8.7
Difference (%)		7.1
Reduction		45%

Crop	Crop Timing	Application Rate
Kiwifruit (Hayward only) Sclerotinia control	At 80-90 % flowering	Apply to the flowers & foliage at a dilution rate of 150 mL/100L water to the point of run off. To ensure good coverage, add an approved super wetter/spreader at the recommended label rate and adjust application rates accordingly (call 0800 116 229 if uncertain of compatibility).

Available from leading horticultural and rural suppliers.
Call 0800 116 229 or visit biostart.co.nz

biostart®